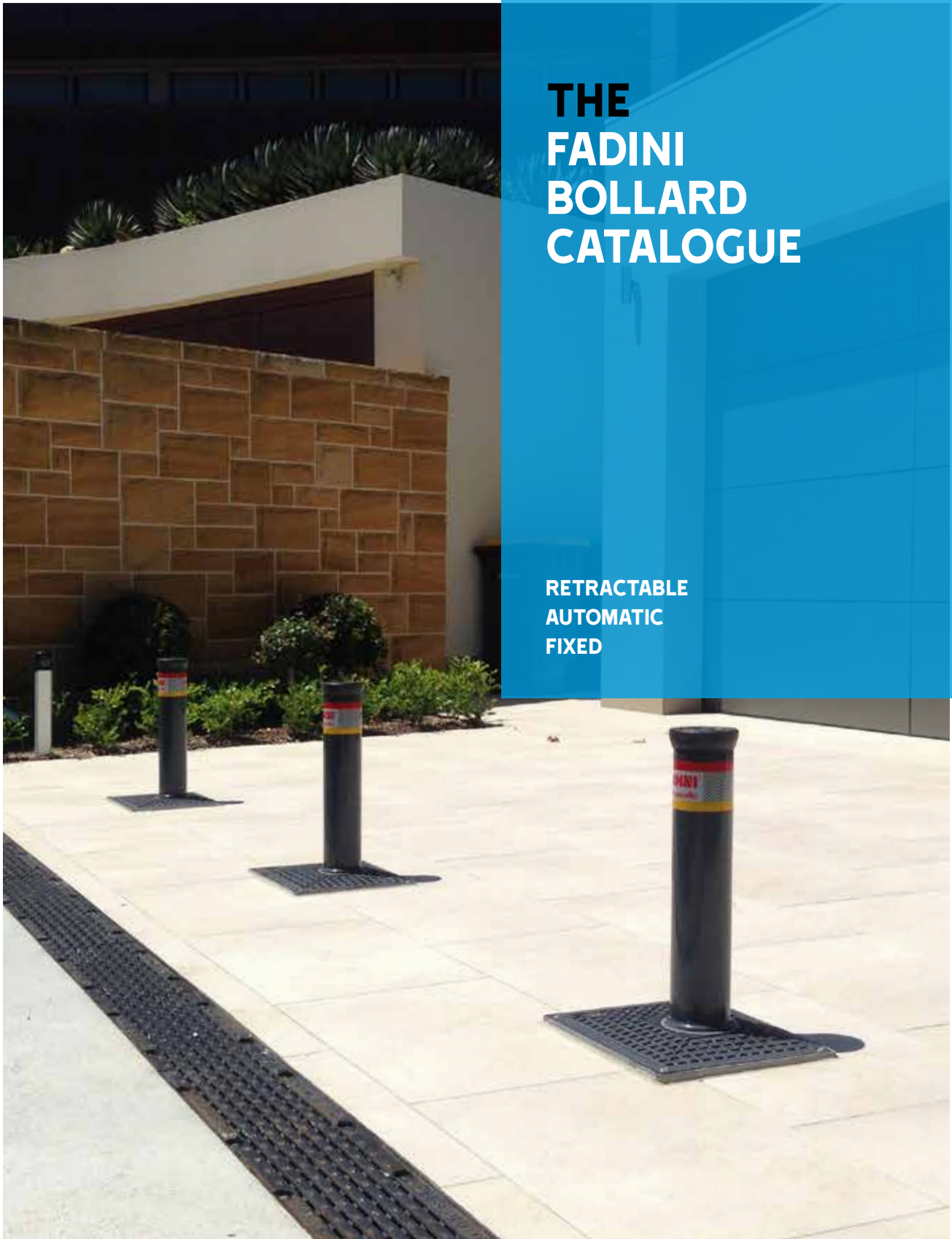


THE FADINI BOLLARD CATALOGUE

RETRACTABLE
AUTOMATIC
FIXED



SUPPLIED IN THE UK BY

CAME 

[CAME.COM](https://www.came.com)

SUPPLIED IN THE UK BY CAME BPT



FADINI AUTOMATION was established in the 1960s and is a leading manufacturer of oil-hydraulic bollards across the European Community, being represented in over 50 countries.

Oil-hydraulic bollards are noise-free and ideal for both small residential and large industrial installations.

FADINI BOLLARDS

4	RETRACTABLE OIL-HYDRAULIC BOLLARDS
4	CORAL 1050-1080
5	VIGILO 2250-2280
6	RETRACTABLE OIL-HYDRAULIC AUTOMATIC BOLLARDS
6	TALOS SERIES
6	TALOS 9470-9470 HRC
7	TALOS 9671-9671 HRC
8	TALOS M30
10	TALOS M50
12	FIXED POSTS
12	CORAL & VIGILO SERIES
13	FIXED BOLLARDS
13	CORAL & VIGILO SERIES

CORAL 1050-1080

Retractable Oil-hydraulic Bollards



Fully retractable oil-hydraulic bollards.

Designed and manufactured to control or stop traffic from private and public driveways, car parks and urban areas in general. Post diameter 100mm. Various height options and led lights available. Rubber band around the post edge. Magnetic limit switches as a standard.

Oil-hydraulic - easy and quick to access the hydraulic drive unit and piston. Manual override by spanner to lower the post. Tested to ensure heavy duty performance even at low or high temperatures. Simple maintenance.

Simple and quick to install - thanks to a reduced weight and the ground casing, no particular excavation or brick works are needed. Each electric cable is (standard) 10m in length.

Versatile - a vast range of accessories for command (transmitters, tags, digipads, etc.) and safety (magnetic loop detector, traffic lights, etc.) allow for reliable and precise control of the installation.

The electronic controller ELPRO S40 manages up to four bollards simultaneously.

Technical features

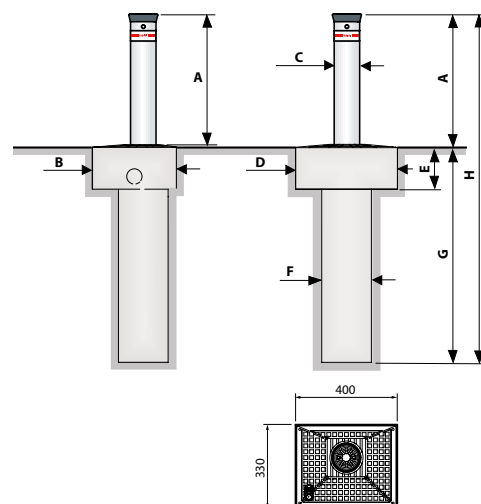
Model	CORAL 1050	CORAL 1080
Post diameter	Ø 100 mm	Ø 100 mm
Post thickness	5 mm	5 mm
Post height	500 mm	800 mm
Post material	Steel S235J	
Finish	RAL 7016 polyester powder coating	
Ground casing	Hot dip galvanised	
Rising time [speed]	~ 4.7 s [11 cm/s]	7.5 s [11 cm/s]
Lowering time [speed]	~ 4.4 s [12 cm/s]	~ 6.6 s [12 cm/s]
Working temperature	-20 °C +80 °C (*)	
Oil type	FADINI oil	
Power supply	230V AC- 50 Hz	
Absorbed power	330 W	
Absorbed current	1.8 A	
Power output	0.25 kW (0.33 HP)	
Protection class of oil-hydraulic motor-pump	IP67	
Frequency of use	Intensive use	
Impact resistance	30,000 J	
Breakout resistance	150,000 J	
Weight	86 kg	104 kg

(*) -40 °C with specific optional accessories, see page 54.

For a correct installation always consult the specific instructions manual.

Check soil permeability, provide a rain water drain system at the base of the casing.

Overall Dimensions (mm)



Each bollard comes with 10 metres of electric cables for motor, limit switches, solenoid valve, led lights where fitted.

Overall dimensions (mm)	A	B	C	D	E	F	G	H
CORAL 1050	500	330	Ø100	400	170	Ø195	850	1350
CORAL 1080	800	330	Ø100	400	170	Ø195	1140	1940

VIGILO 2250-2280

Retractable Oil-hydraulic Bollards



Fully retractable oil-hydraulic bollards.

Designed and manufactured to control or stop traffic from private and public driveways, car parks and urban areas in general. Post diameter 200mm. Various height options and led lights available. Rubber band around the post edge. Post diameter 200mm. Various height options and led lights available. Magnetic limit switches as a standard.

Oil-hydraulic - easy and quick to access the hydraulic drive unit and piston. Manual override by spanner to lower the post.

Tested to ensure heavy duty performance even at low or high temperatures. Simple maintenance.

Simple and quick to install - thanks to a reduced weight and the ground casing, no particular excavation or brick works are needed. Each electric cable is (standard) 10m in length.

Versatile - a vast range of accessories for command (transmitters, tags, digipads, etc.) and safety (magnetic loop detector, traffic lights, etc.) allow for reliable and precise control of the installations. The electronic controller ELPRO S40 manages up to four bollards simultaneously.

The electronic controller ELPRO S40 manages up to four bollards simultaneously.

Technical features

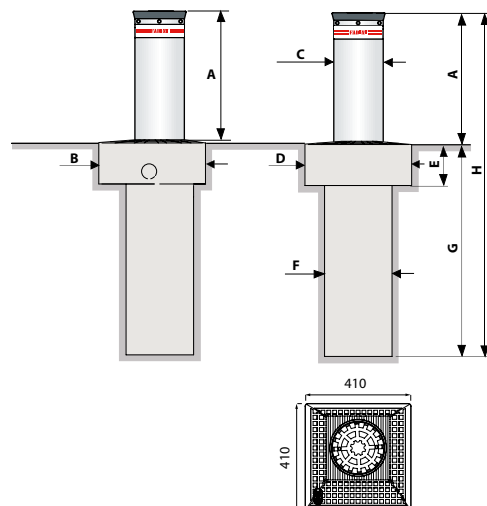
Model	VIGILO 2250	VIGILO 2280
Post diameter	Ø 200 mm	Ø 200 mm
Post thickness	4 mm	4 mm
Post height	500 mm	800 mm
Post material	S235J Steel	
Finish	RAL 7016 polyester powder coating	
Post material stainless steel	AISI 304	
Ground casing	Hot dip galvanised	
Rising time [speed]	~ 5.1 s [10 cm/s]	~ 7.7 s [10 cm/s]
Lowering time [speed]	~ 4.3 s [12 cm/s]	~ 7.0 s [12 cm/s]
Working temperature	-20 °C +80 °C (*)	
Oil type	FADINI oil	
Power supply	230V AC- 50 Hz	
Absorbed power	330 W	
Absorbed current	1,8 A	
Power output	0,25 kW (0,33 HP)	
Protection class of oil-hydraulic motor-pump	IP67	
Frequency of use	Intensive use	
Impact resistance	30,000 J	
Breakout resistance	160,000 J	
Weight	102 kg	131 kg

(*) -40 °C with specific optional accessories, see page 54.

For a correct installation always consult the specific instructions manual.

Check soil permeability, provide a rain water drain system at the base of the casing.

Overall Dimensions (mm)



Each bollard comes with 10 metres of electric cables for motor, limit switches, solenoid valve, led lights where fitted.

Overall dimensions (mm)	A	B	C	D	E	F	G	H
VIGILO 2250	500	410	Ø200	410	170	Ø275	850	1350
VIGILO 2280	800	410	Ø200	410	170	Ø275	1140	1940

TALOS 9470-9470 HRC

Retractable Oil-hydraulic Automatic Bollards



Fully retractable oil-hydraulic automatic bollard

Studied and manufactured - a solution to the demand for functionality and security to protect any public or private vehicle access.

Quick and quiet operations - the motor-pump is located in the upper part of the casing. Led lights make the post visible. 275mm post diameter, 4 mm thickness, 700mm post heights. Available also with post in stainless steel inox AISI 304 and inox AISI 316 options. Customized on demand in any RAL colours, polyester powder coating. Rubber edge on post head. Triangular profile spanner to override for manual descent of the post. HRC (High Resistance Cylinder) post option: breakout resistance 420.000 J.

Quality of the materials - the entire structure is treated with electrolytic galvanization, while the foundation casing is hot dip galvanised. Cable junction box and connector are IP66.

Working temperature -40 °C + 80 °C.

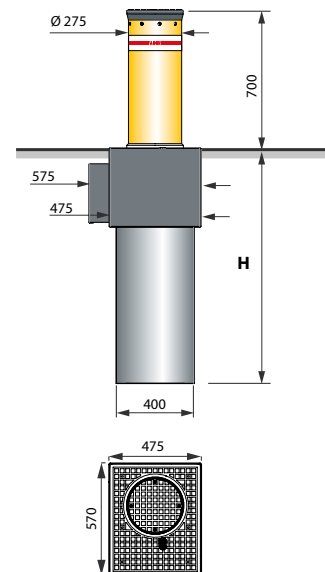
Halved times - in case of impact the post can be easily replaced.

Versatile - a large range of commanding accessories (tags, key-pads, etc.) and security devices (loop detector, traffic lights, beeper signalling the post movements, 24 V DC solenoid valve for the post to lower in case power supply is disconnected, obstacle detector to prevent the post from rising when an obstacle is on it, anti-theft cover plate, etc.) to ensure the most efficient and precise control over the systems. The ELPRO S40 electronic controller can manage up to 4 bollards simultaneously.

Technical features

Post diameter	Ø 275 mm
Post thickness	4 mm
Post height	700 mm
Post material	Steel S235J
Post finish	RAL 1028 polyester powder coating
Post material inox version	AISI 304 / AISI 316 stainless steel
Foundation casing	Hot dip galvanised
Working temperature	-20 °C +80 °C (-40 °C+80 °C with heater)
Oil type	FADINI oil
Power supply	230V AC- 50 Hz
Absorbed power	1,100 W
Absorbed current	1.8 ÷ 3.5 A
Protection class of oil-hydraulic motor-pump	IP67
Frequency of use	Intensive use
Impact resistance	52,000 J
Breakout resistance	Model HRC – 70,000 J
Max. Static load	320,000 J
Breakout resistance	Model HRC – 420,000 J
Weight	20,000 kg

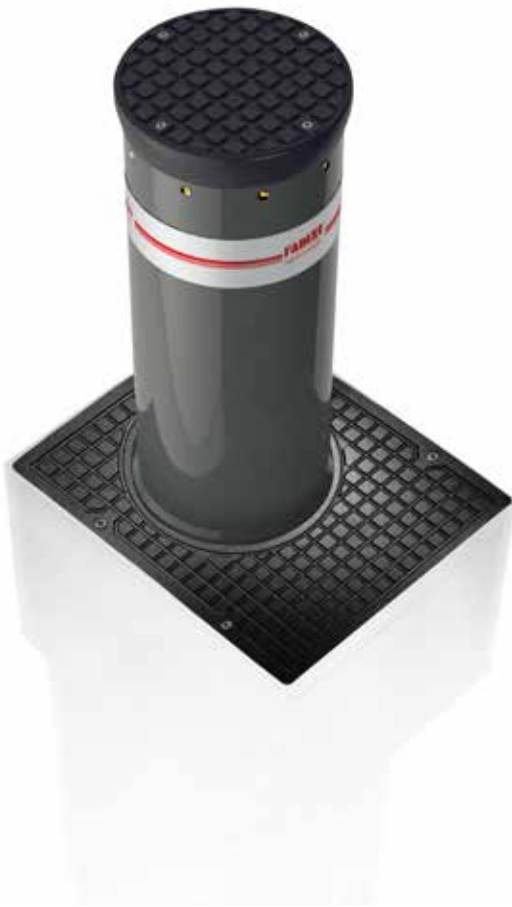
Overall Dimensions (mm)



Post travel (mm)	Constraint (mm)	H (mm)
700	200	1,010
	400	1,210

TALOS 9671-9671 HRC

Retractable Oil-hydraulic Automatic Bollards



Fully retractable oil-hydraulic automatic bollard

Studied and manufactured - anti-breakout and anti-tip for maximum security, an ideal solution for the protection of car parks, shops, entries to commercial centres, banks, car dealers and generally all those sensitive areas needing safeguarding.

Quick and quiet operations - the motor-pump is located in the upper part of the casing. Led lights make the post visible. 275mm post diameter, 12mm thickness, 700mm post heights. Customized on demand in any RAL colours, polyester powder coating. Rubber edge on post head. Triangular profile spanner to override for manual descent of the post. HRC (High Resistance Cylinder) post option: breakout resistance 550.000J.

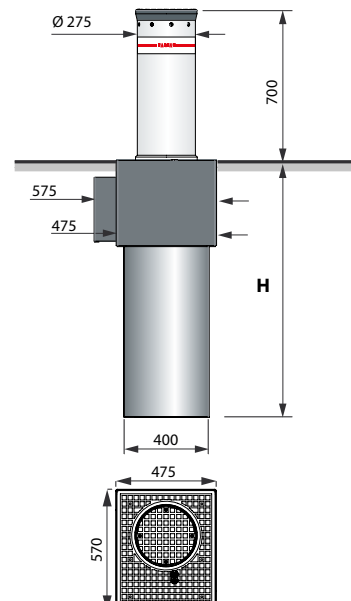
Quality of the materials - the entire structure is treated with electrolytic galvanization, while the foundation casing is hot dip galvanised. Cable junction box and connector are IP66.

Working temperature -40 °C +80 °C.

Versatile - a large range of commanding accessories (tags, key-pads, etc.) and security devices (loop detector, traffic lights, beeper signalling the post movements, 24 V DC solenoid valve for the post to lower in case power supply is disconnected, obstacle detector to prevent the post from rising when an obstacle is on it, anti-theft cover plate, etc.) to ensure the most efficient and precise control.

The ELPRO S40 electronic controller can manage up to 4 bollards simultaneously.

Overall Dimensions (mm)



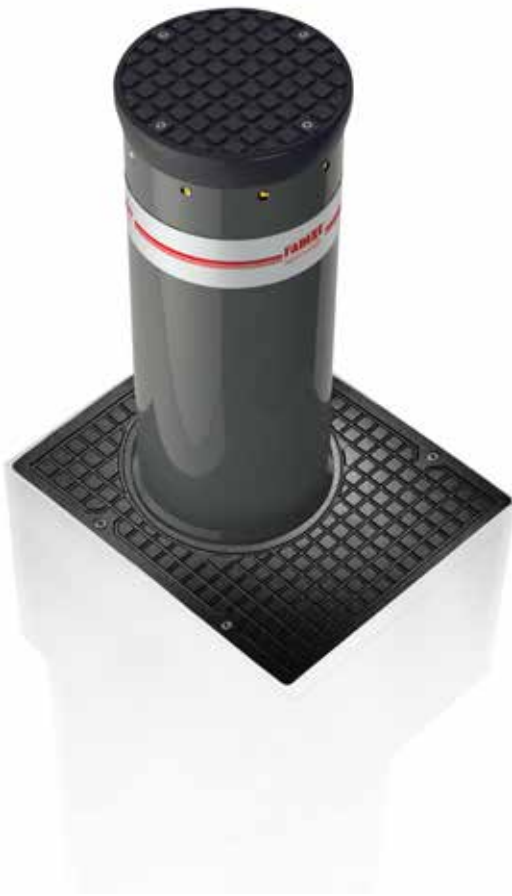
Post travel (mm)	Constraint (mm)	H (mm)
700	200	1,010
	400	1,210

Technical features

Post diameter	Ø 275 mm
Post thickness	12 mm
Post height	800 mm
Post material	Steel S355J
Post finish	RAL 7016 polyester powder coating
Foundation casing	Hot dip galvanised
Working temperature	-20 °C +80 °C (-40 °C+80 °C with heater)
Oil type	FADINI oil
Power supply	230V AC- 50 Hz
Absorbed power	1,100 W
Absorbed current	1.8 A
Protection class of oil-hydraulic motor-pump	IP67
Frequency of use	Intensive use
Impact resistance	60,000 J
Breakout resistance	Model HRC – 90,000 J
Max. Static load	450,000 J
Breakout resistance	Model HRC – 550,000 J
Weight	20,000 kg

TALOS M30

Retractable Oil-hydraulic Automatic Bollards



Fully retractable oil-hydraulic automatic bollard.

Designed - in compliance with ASTM/PAS 68 standards with some specific, structural components for the foundation casing. Suitable for heavy duty applications and for the protection of driveways to sensitive sites (anti-terrorism) such as military bases, embassies, banks, government buildings.

Quick and quiet operations - the motor-pump is located in the upper part of the casing. Led lights make the post visible. 275mm post diameter, 12 mm thickness, 800 mm post height and 400 mm constraint (HRC). Customized on demand in any RAL colours, polyester powder coating. Rubber edge on post head.

Quality of the materials - the structure is treated with electrolytic galvanization, while the foundation casing is hot dip galvanised. Cable junction box and connector are IP66. Working temperature -40 °C + 80 °C.

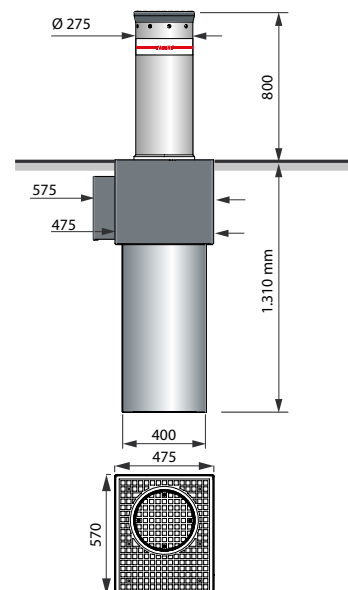
Optional configurations - a large range of commanding and safety accessories are available.

The ELPRO S40 electronic controller can manage up to

Technical features

Post diameter	Ø 275 mm
Post thickness	12 mm
Post height	800 mm
Post material	Steel S355J
Post finish	RAL 7016 polyester powder coating
Foundation casing	Hot dip galvanised
Rising time [speed]	~4.50 s [18 cm/s]
Lowering time [speed]	~3.42 s [23 cm/s]
Working temperature	-20 °C +80 °C (-40 °C+80 °C with heater)
Oil type	FADINI oil
Power supply	230V AC- 50 Hz
Absorbed power	1,100 W
Absorbed current	1,8 A
Protection class of oil-hydraulic motor-pump	IP67
Frequency of use	Intensive use
Impact resistance	150,000 J
Breakout resistance	700,000 J
Max. Static load	20,000 kg

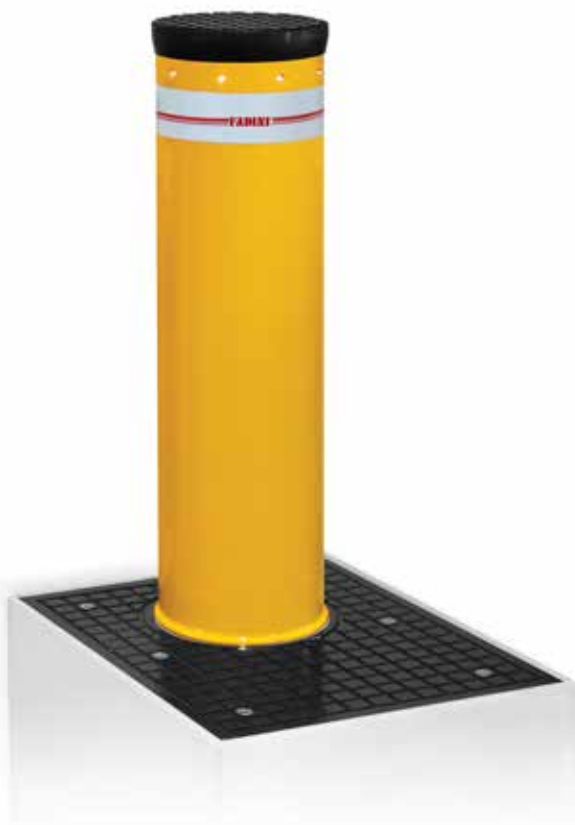
Overall Dimensions (mm)





TALOS M50

High Security Retractable Oil-hydraulic Automatic Bollards



High security fully retractable oil-hydraulic automatic bollard

Security oil-hydraulic automatic bollard, designed for heavy duty applications and recommended for the protection of special sites and all those areas where a high level of security and perimeter protection is needed to prevent terrorist attacks. A single TALOS M50 has successfully passed the crash test being able to withstand the impact of a 7.5 tonne truck at a speed of 50 mph without suffering any damage and be properly functional again. Fadini is the first manufacturer that has obtained all the current significant and internationally accredited certificates

For its bollard type TALOS M50:

- ASTM F2656-15 C750

(an even more severe standard than M50, former K12)

- PAS 68:2013 V/7500 (N3)/80

- IWA 14-1:2013 V/7200 [N3C]/80

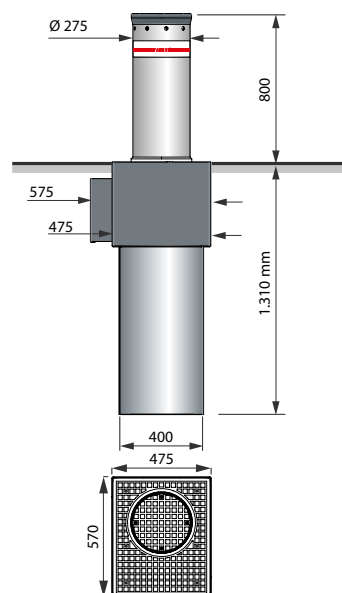
The oil-hydraulic drive unit is located in the upper part of the bollard foundation casing, made up of two pumps. An oil-hydraulic locking device is incorporated to keep the post in standing position all the time, even in case of power failure. The bollard is equipped with:

Two magnetic limit switches, one for the post in raised position and one for the post in lowered position, LED lights, type approved retroreflective sticker, quick-release connector (protection grade IP66) for the power supply cable. ELPRO S50 is the electronic controller specifically dedicated to it. TALOS M50 fixed version also available.

Technical features

Post diameter	Ø 275 mm
Post thickness	20 mm
Post height	1000 mm
Post material	Steel S355J
Post finish	Polyester powder coating
Foundation casing	Hot dip galvanised
Rising time [speed]	~5.0 s [20 cm/s]
Lowering time [speed]	~3.2 s [31 cm/s]
Working temperature	-20 °C +80 °C (-40 °C+80 °C with heater)
Oil type	FADINI oil
Power supply	230V AC- 50 Hz
Absorbed power	3,100 W (1,500+1,550)
Absorbed current	10 ÷ 13 A
Protection class of oil-hydraulic motor-pump	IP67
Frequency of use	Intensive use
Impact resistance	700,000 J
Breakout resistance	2,000,000 J
Max. Static load	20,000 kg

Overall Dimensions (mm)





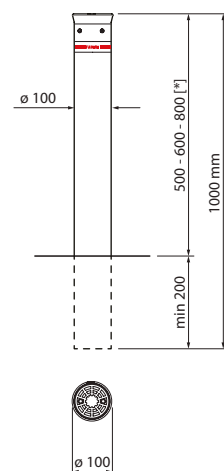
FIXED POSTS

Coral & Vigilo Series



Easy to install fixed posts.

The CORAL fixed posts are easy to install, no invasive preparatory works are needed: they can be sunk in a concrete foundation directly (collision resistance depending on anchoring depth). Ideal to delimit public or private areas, they perfectly match installations where their automatic versions are installed (all pre-set as a standard to take 4 LED lights and the holes are blanked with plastic plugs, same design as the LED lights). Cataphoresis treated and polyester powder coated S235J steel post.



Product code	Impact resistance (**)	Breakout resistance (**)
F/2541L	30,000 J	150,000 J

[*] recommended heights to match the fixed bollards with the respective automatic and semi-automatic versions.

(*) In case LED lights are required, refer to item code No. 1062L.

(**) Various factors, such as the compaction index, soil permeability coefficient and kind of concrete may reduce significantly the values indicated.

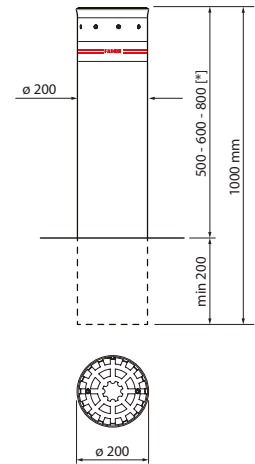
FIXED BOLLARDS

Coral & Vigilo Series



Easy to install fixed bollards..

The VIGILO fixed posts are easy to install, no invasive preparatory works are needed: they can be sunk in a concrete foundation directly (collision resistance depending on anchoring depth). Ideal to delimit public or private areas, they perfectly match installations where their automatic versions are installed (all pre-set as a standard to take 8 LED lights and the holes are blanked with plastic plugs, same design as the LED lights). Cataphoresis treated and polyester powder coated S235J steel post or AISI 304 stainless steel version.



Product code	Impact resistance (**)	Breakout resistance (**)
F/2586L	30,000 J	160,000 J
F/2588L	30,000 J	160,000 J

[*] recommended heights to match the fixed bollards with the respective automatic and semi-automatic versions.

(*) In case LED lights are required, refer to item code No. 2572L

(**) Various factors, such as the compaction index, soil permeability coefficient and kind of concrete may reduce significantly the values indicated.

OUR WORLDWIDE NETWORK.

We have a worldwide network.

From our Treviso Headquarters - the heart of the Group - we coordinate 7 production plants and 6 R&D centres. We sit across the market thanks to branches in 21 countries, and operate in 118 countries through our business partners and distributors.

The world is forever growing and needs higher security and control within living spaces and transportation to manage both selection and capacity.

At CAME, we are the technology partner for projects that require integrated systems to deliver these global demands, improving the quality of our living space - whether it be private or public.

Our products are made for controlling homes as well as managing urban venues and any workplace, anywhere in the world.

Our group share common goals as we have a single and unique vision, making us innovative and reliable. Thanks to the synergies among all our divisions and brands globally, we share an operating approach that enriches our diversity.

BRANCHES NORTH AND LATIN AMERICAS

Brazil
Chile
Mexico
Perù
USA

1700

EMPLOYEES AROUND THE WORLD



CAME HQ

Treviso, ITALY

BRANCHES EUROPE

Italy	Poland
Belgium	Portugal
Croatia	Russia
France	Spain
Germany	The UK
Ireland	Turkey
Netherlands	

6

R&D CENTRES

21

COUNTRIES WITH DIRECT
BRANCHES

118

COUNTRIES WITH PARTNERS
AND DISTRIBUTORS

7

PRODUCTION PLANTS

Dosson di Casier - ITALY
Sesto al Reghena - ITALY
Spilimbergo - ITALY
Hemel Hempstead - UK
Entraigues - FRANCE
Barcelona - SPAIN
Kocaeli - TURKEY

!

BRANCHES ASIA

India
UAE

BRANCHES AFRICA

South Africa

480

WORLDWIDE
DISTRIBUTORS
AND PARTNERS

CAME.COM

CAME BPT - North

Unit 1B
Sills Road
Willow Farm Business Park
Castle Donington
DE74 2US

Tel: 0115 921 0430

CAME BPT - South

Liberta House
Maxted Road
Maylands Ind. Est.
Hemel Hempstead
Herts
HP2 7DX

Tel: 01442 230 800

CAME BPT - Ireland

Unit 9
The Westway Centre
Ballymount
Dublin 12

Tel: +353 (0)1 450 7442



© BOLLGAT0120 - 2020 - EN

YOU MAY NOT EVEN PARTIALLY REPRODUCE THIS DOCUMENT

CAME RESERVES THE RIGHT TO MAKE ANY CHANGES TO THIS DOCUMENT AT ANY TIME

THE DATA AND INFORMATION SHOWN IN THIS CATALOGUE ARE SUBJECT TO CHANGE WITHOUT OBLIGATION TO GIVE PRIOR NOTICE BY CAME S.P.A, E&OE



CAME S.p.A.

Came cancelli automatici S.p.A.
is certified for Quality and Environment

UNI EN ISO 9001

UNI EN ISO 14001

BS OHSAS 18001